

**A PLACE
TO LIVE**



**A PLACE
TO GROW**

2010 Annual Report

Est. 1943
Boysville
A Texas Home for Boys & Girls

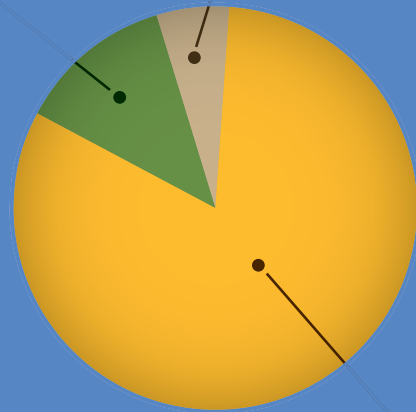


PROGRAM ALLOCATIONS

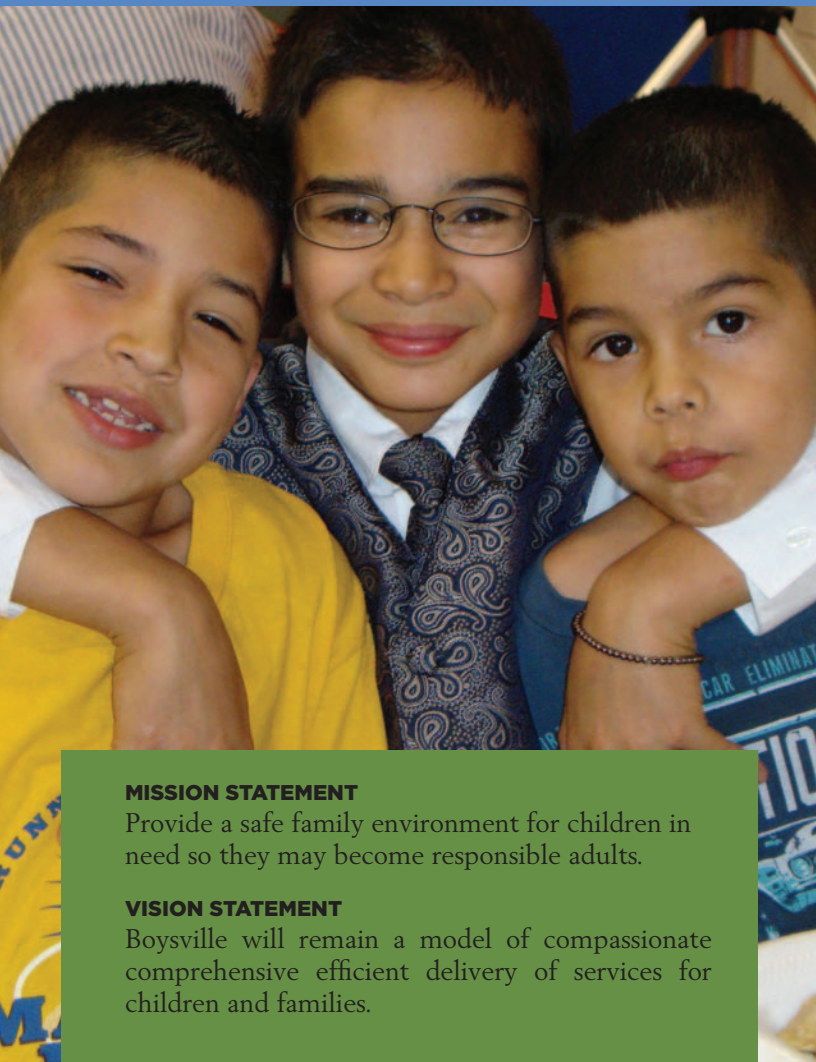
PROGRAM ALLOCATION ACTUAL FOR THE FISCAL YEAR ENDED JUNE 30, 2010

12.40%
MANAGEMENT &
ADMINISTRATION

5.79%
FUNDRAISING



81.81%
PROGRAM & SERVICES



MISSION STATEMENT

Provide a safe family environment for children in need so they may become responsible adults.

VISION STATEMENT

Boysville will remain a model of compassionate comprehensive efficient delivery of services for children and families.



FINANCIAL SUMMARY

Boysville's Fiscal Year is from July 1st through June 30th. For the Fiscal Year ended June 30, 2010. Boysville budget was \$4,875,000. To see our complete 990, visit boysvilletexas.org.

FUNDING SOURCES

FUNDING SOURCES ACTUAL FOR FISCAL YEAR ENDED JUNE 30, 2010

48.89%
DONOR CONTRIBUTIONS

24.31%
CONTRACT FEE FOR SERVICES

1.55%
GOVERNMENT SUPPORT

6.29%
SPECIAL EVENTS

12.20%
TRUST INCOME

6.76%
GRANTS

FROM THE BOARD PRESIDENT & CEO

This past year, through your generosity as donors, volunteers, and supporters, Boysville helped 217 children, ages 2 months to 24 years who needed a safe place to live. We continue to provide a continuum of care to meet the current needs of children living at Boysville.

Through great leadership by Paula Tucker, Chief Operating Officer for Boysville, we have continued to enhance the scope of some programs while introducing innovative new ones. Our Community Based Foster Care Program has grown to three homes and serves 15 children. Our Independent Living Program is utilizing an existing cottage on campus. Our high school graduates and college students living in San Antonio can continue to live with us on campus until they are self-sufficient. Unfortunately, we have seen young adults who leave care at 18 only to become homeless and do not continue their education. By opening this home, they continue to receive support from our case manager to help them prepare for life on their own.

Our Board of Directors has provided strong leadership as we continue to closely watch the economy. The Boysville Auxiliary, serving Boysville for over 50 years, continues to work tirelessly for our children. Sales at the store for this year were the highest in its long history. Revenue from the Thrift Store supports our programs on campus. Many thanks and congratulations to Lillie Putman, president of the Auxiliary, and to the staff and volunteers of the Auxiliary who made this year so successful.

The challenges ahead for the next year are significant. Funding existing and future programs will be the foremost challenge. Innovative budget planning will be required. It is also imperative that we restore the diminished assets of the Boysville Foundation. Changes within the State Foster Care system will also impact reimbursement fees for the children living here under the state's care.

We remain confident that we have the leadership and talent throughout the Boysville organization to be successful in meeting those challenges. The focus and theme for 2011 will be to forge a truly integrated Development Team of the Boysville staff and the Board of Directors. A more tightly integrated structure and team of the Boysville Board and the Boysville staff offers the opportunity to raise the fundraising bar.

As always, we remain grateful to our many supporters, who in spite of these challenging economic times, have continued to support Boysville financially through foundation giving; individual giving; the memorial and happy gift program, the Annual and Christmas campaigns, as well as the annual auction. In addition, the growth in volunteer support in all facets of Boysville has been noticeable throughout 2010.

In closing, please know that your continued support through donations, volunteerism and activism is truly appreciated by the board, the staff and most importantly, the children. Thank you for allowing us to continue our mission of providing a safe, family environment for children in need so that they may become responsible adults.

CORE VALUES

ADVOCACY

FAMILY

SPIRITUAL
DEVELOPMENT

EDUCATION

MUTUAL RESPECT

DIGNITY

COMPASSION

RESPONSIBILITY



CEO
DAVE MCILVOY



PRESIDENT
MANNY RUIZ



PRESIDENT
MANNY RUIZ*



SECRETARY
MARK MEADOR*



VICE PRESIDENT
MICHAEL H. PATTERSON*



TREASURER
ASHLEY SMITH*



ASST.SEC./TREASURER
JUSTIN SOBEY*



GENDER

FEMALE51%
MALE..... 49%

AGE

0-5 35%
6-10.....31%
11-15.....20%
16-18 14%

RACE

ASIAN 1%
AFRICAN.....12%
AMERICAN
HISPANIC71%
MULTI RACIAL.....2%
WHITE..... 14%



2010 BOARD OF DIRECTORS

BOARD OF DIRECTORS

- Larry S. Anthis
- Barry Bankler
- Robert S. Beadle
- Ronald D. Dawson
- Meade Flavin
- Patsy Greeman
- Charlie Gregory
- Donald J. Hand
- John Hanna
- Dana Green Heffernan
- Brooks Holzhausen
- Anthony A. Imondi
- Robert King
- Pam Kraft
- Jeffrey A. Kuhn
- Jeff Landrum
- Tom Llewellyn
- David Luschen
- Morgan Matson
- Leroy P. Muehlstein
- Richard (Dick) O'Neil
- Lillie Putman
- Vaughan Ruple
- Cathy S. Smith
- Ryan Smith
- Kelly Van Burkleo
- Larry Van Horn
- Darrel L. Van Kirk
- Steve Vander Vorste
- Mark D. Werner
- Mike Wheeler

BOARD OF TRUSTEES

(Past Presidents—Living)

- Jolene Davis* 2009
- David McIlvoy* 2008
- Jim Hollerbach* 2007
- Steve Hampton* 2006
- John H. Shields 2005
- Thomas Hawkes* 2004
- Virginia "Ginger" Schultz 2003
- John W. Robb* 2002
- Harold Putman, Jr.* 2001
- Rudy S. Treviño ** 2000
- Charles W. Lutter, Jr.* 1999
- Robert C. Cole* 1998
- King Mawhinney 1997
- Wallace T. Jacobs** 1995-96
- Thomas Cunningham** 1994
- Paul A. Parker 1993
- Robert Cherniss 1992
- Buster Horlen 1991
- James L. Drought 1990
- Jim W. Keyes* 1989
- J. Carlos Jones 1988
- John R. Anthis 1987
- Jimmy Hasslocher 1986
- C. Gilbert House 1984
- James H. Uptmore 1983
- George D. Rawlings 1978
- James M. Carnes 1975
- J. B. Chandler, Jr. 1966
- Robert L. Bobbitt, Jr. 1959
- M. Watson Frazar 1955

HONORARY DIRECTORS

- Cal C. Banker
- Arthur H. Bayern
- Stanton P. Bell
- Alice Bender
- W. A. Coleman
- Stephen H. Dedman
- Tex Farnsworth
- Maria V. Garcia
- Mary T. Giniewski
- Carlton Hagelstein, Jr.
- Carolyn Heath
- Connie Hildebrand
- Lorena Holden
- Jimmie Joffe
- Joyce O'Krent Koch
- Bill Mochel
- Burton Neesvig, M. D.
- Patrick M. Palmer, M.D.
- Adrian Quintanilla
- George Rapier, M. D.
- Scereta Rodriguez
- Al Sturchio
- Senator Jeff Wentworth
- Pat Wheeler
- Ed White, Jr.
- Dale Wood, M.D.

*Denotes Executive Committee **Denotes Foundation Trustees

EMERGENCY SHELTER

At eight days old, Gabriel (not his real name) was a heroin addict.

His mother, a heavy drug user, continued to abuse heroin throughout her pregnancy. She passed her addiction to Gabriel. He came to the Boysville Emergency Shelter directly from the hospital. He began going through withdrawals immediately. He cried. He shook uncontrollably as the drug worked its way out of his system. Our caring staff helped him through this difficult process. After 6 weeks, he was placed with a foster family in the community.

His story is not unique. Drug addiction is not the only problem we see in children under the age of 4. Unfortunately, in America, statistics show that every 35 minutes a child is abused or neglected.

In 2010, the need to care for this vulnerable population began growing at an outstanding rate and agencies are struggling to meet the need. Research indicates that very young children, ages four and younger, are the most frequent victims of child fatalities. NCANDS data for 2008 demonstrated that children younger than 1 year accounted for 45.3% of fatalities, while children younger than 4 years accounted for nearly 80% (79.8%) of fatalities. These children are the most vulnerable for many reasons, including their dependency, small size, and inability to defend themselves. It is evident the need to provide a safe, living environment for these children is vital.

The Emergency Shelter at Boysville provides temporary housing for up to 20 children, infants to 17 years old, who are in need of emergency placement. Of the 20, we can care for 8 children under the age of four. In 2010, we turned away approximately 10 to 15 infants and toddlers each month who were in need of care.

The average stay for a child at the shelter is 30 days but can remain for up to 90 days. While placement is short-term, the services provided are comprehensive and outcome directed. Children leaving the Emergency Shelter at Boysville may move into our Residential or Foster Care Program.

GOALS AND OUTCOMES 2010

- Children will be free from abuse and neglect while in care
100% met during this time
- Clients, parents and children are satisfied with the services they receive
90% are satisfied with the services they received
- Children will exhibit improved emotional health
100% of the children continue to progress to reach this outcome

RESIDENTIAL CARE



While most teenagers value shopping for the latest fashion or upgrading their cell phone to the newest model, Mashelle, 15, values family. She believes “having your own time with people not so much related to you but people you know are going to be there for you” is invaluable.

Right now, more than 500 Bexar County children spend their childhoods essentially living out of a suitcase—no parents, no permanent homes. Too often, children have to pay a heavy price for adult mistakes.

Having grown up at Boysville the last five years, Mashelle hopes to one day find a family she can call her own. Mashelle is very athletic and has participated in many of the Boysville activities including basketball, volleyball and our annual fashion show. This school year Mashelle decided to cut back on extra-curricular activities to concentrate on her academics. Her goal is to go to college and become a veterinarian.

Like many teenagers waiting to be adopted, Mashelle realizes she faces some hardships. Statistics prove teenagers face a difficult time getting adopted. Until that day comes, Boysville will remain her family for as long as she needs us.

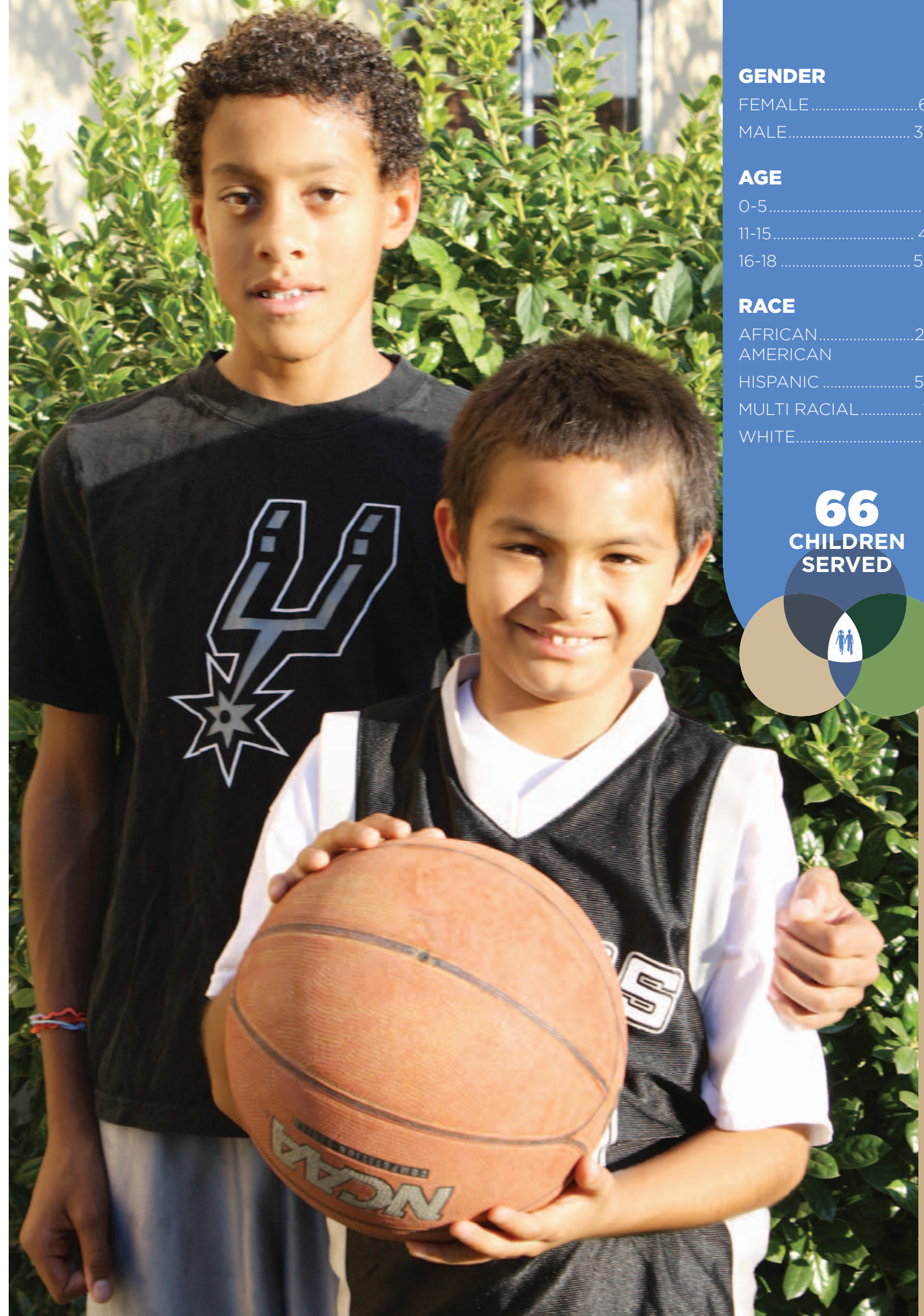
Boysville’s mission is to provide a safe, family environment for children in need so that they may become responsible adults. For children like Mashelle, and the many who have passed through our doors since 1943, this is the place they call home.

Our Residential Program at Boysville offers a unique family-environment opportunity to children who cannot remain in their own family homes. In 2010, over 70 percent of our children were placed by the Texas Department of Family and Protective Services. The remaining 30 percent are private-placed children. We are unique in San Antonio as we continue to accept children without regards to ability to pay. These children may be experiencing homelessness, extreme poverty or a parental drug, alcohol or physical abuse problem. Children who are placed by their parents or guardians are placed with us while they work to regain control over their lives.

Children living within our residential program live in a gender separated cottage along with up to 9 additional children. Each cottage is supervised by married house-parents who work with each child to help them succeed in school and teach social and independent living skills.

GOALS AND OUTCOMES 2010

- Children will be free from abuse and neglect while in care
100% met during this time
- Clients, parents and children are satisfied with the services they receive
88% are satisfied with the services they received
- Children will improve academic performance
75% of children continue to progress to reach this outcome
25% of children successfully achieved this outcome
- Children will improve their emotional health
77% of children continue to progress to reach this outcome
23% of children successfully achieved this outcome
- Family Relationships will be improved and strengthened
89% of children continue to progress to reach this outcome
11% of children successfully achieved this outcome
- Children will develop independent living skills
82% of children continue to progress to reach this outcome
18% of children successfully achieved this outcome
- Children will improve appropriate social skills
77% of children continue to progress to reach this outcome
23% of children successfully achieved this outcome



GENDER	
FEMALE.....	61%
MALE.....	39%
AGE	
0-5.....	5%
11-15.....	41%
16-18.....	54%
RACE	
AFRICAN.....	27%
AMERICAN	
HISPANIC.....	53%
MULTI RACIAL.....	11%
WHITE.....	9%

66
CHILDREN
SERVED

GENDER

FEMALE 48%
MALE 52%

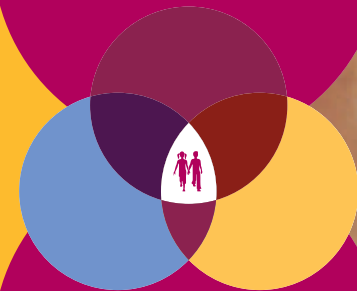
AGE

0-5 19%
6-10 67%
11-15 14%

RACE

HISPANIC 100%

21
CHILDREN
SERVED ON
CAMPUS



7
CHILDREN
SERVED IN
THE COMMUNITY

GENDER

FEMALE 14%
MALE 86%

AGE

0-5 57%
6-10 43%

RACE

HISPANIC 100%



FOSTER CARE

One of the fastest growing programs on the Boysville campus is our Foster Care Program. Implemented in 2004, the Foster Care program began on campus at the request of the Texas Department of Family and Protective Services.

The Foster Care Program on campus is unique in its concept to provide placement for large siblings groups. In South Texas, the need to place sibling groups of 4 or more is growing. With our large cottages, we have been able to help sibling groups of five, six and even ten children.

Boysville expanded our program in 2010 to include a Community Based Foster Care Program in homes surrounding Boysville.

“Our goal is to help as many children as possible,” said Paula Tucker, Chief Operating Officer for Boysville. “Our program is unique as all foster children in our program living in the community receive the same case management support, therapeutic support and recreational support as children living on campus.”

The CBFC program at Boysville seeks families who are interested in being foster parents and who live within the parameters of the Judson Independent School District. The goal is to have 15 foster homes within the community by the end of Fiscal Year 2011. We provide training, support and financial stipends to families willing to become foster parents. The CBFC is responsible for placing children who are under the care of the Texas Department of Family and Protective Services. The CBFC provides case management, therapeutic services and recreational opportunities for foster children placed in Boysville’s Foster Care program. The CBFC program allows parents to live in their own accommodations and provide care for one-to-four children in keeping with the amount of space and the number of biological children they have.

The program provides a continuum of support for children under the care of the Texas Department of Family and Protective Services. By the end of December 2010, three community foster based homes had opened caring for 7 children, ages 2 to 10. Our on campus foster care program had 2 homes open caring for 13 children ranging in ages from 2 to 14 years old.

GOALS AND OUTCOMES 2010

- Children will be free from abuse and neglect while in care
100% met during this time
- Clients, parents and children are satisfied with the services they receive
90% are satisfied with the services they received
- Children will improve academic performance
59% of children continue to progress to reach this outcome
41% of children successfully achieved this outcome
- Children will improve their emotional health
77% of children continue to progress to reach this outcome
23% of children successfully achieved this outcome
- Family Relationships will be improved and strengthened
90% of children continue to progress to reach this outcome
10% of children successfully achieved this outcome
- Children will develop independent living skills
82% of children continue to progress to reach this outcome
18% of children successfully achieved this outcome
- Children will improve appropriate social skills
76% of children continue to progress to reach this outcome
24% of children successfully achieved this outcome

GENDER

FEMALE52%
MALE48%

WHERE ARE OUR GRADUATES?

NORTHEAST LAKEVIEW
SAN ANTONIO COLLEGE
ST. PHILIP'S COLLEGE
UTSA
TARLETON UNIVERSITY
SANFORD-BROWN COLLEGE
TEXAS SOUTHERN UNIVERSITY
TEXAS A&M CORPUS CHRISTI

18
CLIENTS
SERVED



INDEPENDENT LIVING

Boysville continues to provide a continuum of care for children of all ages. One of our most successful programs is our Independent Living Program. For many teens, becoming 18 is a pinnacle point in their lives. For children living at Boysville, it is a decision making time.

As wards of the state, young adults turning 18 may choose to remain in care or discharge themselves. Unfortunately, statistics show that many who choose the latter option become homeless, young parents or drug addicted.

Boysville's Independent Living Program allows young adults to continue living at Boysville and encourages them to pursue college, vocational training or a military career. Young adults in this program receive housing, allowances, case management support and continued therapeutic support as they transition into adulthood.

In 2010, we re-opened Holiman cottage as an Independent Living home for young adults 18-24. High School seniors and graduates live with a Residential Advisor and work on independent living skills such as meal preparation, budgeting, job readiness all while attending school.

It is the hope of this program to continue Boysville's mission of helping children become responsible adults.



PRECIOUS MINDS PARENTING PROGRAMS

A child's best teacher is his parent.

The Precious Minds New Connections program, funded by a grant from the Kronkosky Foundation, educates parents, grandparents, day care workers and guardians on effective ways to work with children. From positive reinforcements on discipline strategies to reading with children, the PMNC program helps parents become positive role models in the lives of children.

Our program offered multiple classes throughout our regional area and included classes taught in Spanish only. The majority of our participants agreed that our classes helped them become better parents.

"These workshops have had a tremendous impact on my family. The classes have helped make me and my husband understand our kids and realize everything is good. We also learn how to listen and communicate more effectively with our kids. Our reactions and actions dramatically affect how our kids grow and develop. One of my biggest challenges is getting my daughter into the bath. Each night we went through tantrums that escalated to a very stressful night and causing her to get less sleep. It turned into a viscous cycle. After attending the discipline class, I learned she didn't want the day to end so she resisted bath time. I learned to approach her and ask her to think of an activity she would like to do after bath. She immediately stopped crying and took a bath. We dress pumpkins and the next night we read aloud to them. This also gave us time together. I am so happy I took this class!"

Jennifer, mother of a two-year old and five-year old

Classes are offered every 6 to 9 weeks and a complete schedule can be found online at www.boysvilletexas.org

GENDER

FEMALE86%
MALE14%

RACE

ASIAN2%
AFRICAN5%
AMERICAN
HISPANIC57%
NATIVE1%
AMERICAN
WHITE33%
OTHER2%

468
PARTICIPANTS



GOALS

Our goal is for 90% of the participants to agree with this statement

"This parent education program will help improve my parenting skills" from the Participant Satisfaction Questionnaire completed during the last class.

2010 goal was met with 96%

SPECIAL THANKS TO OUR CHRISTMAS FUND DONORS:

Robert Abbott
Hazel V. Albright
Uisuk Allen
Salvador Alvarez
Donald L. Anderson
Anonymous
John R. Anthis
Fernando Arellano
Gilbert G. Arias
Julian Aronson
Audrey P. Atkinson
Bertrand O. Baetz
Bill Bain
Harry A. Balling
Cal C. Banker
Baptist Credit Union
Bruce E. Barker
Sharon Barnes
Tucker Barnes
Jeff S. Barrish
Bob Bass
Paula W. Bentham
Delbert Berryman
Kathy Bienek
Jackie Blanchard
Frank A. Blase
Garnet Bogan
Hayden Boland
Yolanda Bolum
John D. Box
Marjorie Boyson
Charles R. Bradshaw
William R. Breitenkamp
Barbara J. Brown
W. S. Brown
William G. Bryan
Patricia A. Bryson
C.F. Buckley
Steve Buckley
Marilyn Burge
Mary Burns
Michael R. Burris
James L. Burrows
John Canavan
Mary M. Cantu
Donnie R. Carver
Jerry K. Carver
Richard R. Castillo
Frank Castro
Peggy Castro
Marcia Chamberlain
James Chandler
Henry S. Cherry
Mildred L. Chiesa
Merlene A. Childers
Jean F. Clark
Clearview Services, Inc.
Coker Methodist Church
Marie Cole
Rose Lee Collins
James P. Concannon
Barbara S. Condos
Matt Conrad
Emily Cooper
Irven R. Cooper
George M. Cox
CR Mechanical
Madelyn Craven
James H. Cummings
Janis Curran
Russell J. Cuskey
Bill W. Davis
Steven A. Davis
Leonard E. Deal
Stephen H. Dedman

Hoyt G. Dispain
John F. Donohue
Carole F. Dornbluth
Mary Ann Downs
William H. Dube
Thomas Duffy
Carl I. Duncan
Matthew M. Dunn
Frank D. Duperier
Carl J. Dykman
Alfred T. Dylla
Ann Echols
Debra E. Eippert
Mary E. Engel
Winston Erelles
Carolyn E. Ericson
Barbara L. Fake
Paul Fauerso
Lynn Faulkner
FedEx
Five Star Cleaners #2
Alan J. Flory
Charles Flynn
Ed Forester
Martha J. Fosdick
John France
William G. Fusco
Adeline C. Galm
David L. Garber
Jose F. Garcia
William F. Gardner
Lawrence D. Garrison
Robert Gaylor
Mary Jo George
Mary T. Giniewski
Donna M. Glass
Anne C. Gleiser
William Glisson
Carroll Gloor
Lawrence J. Goland
Roy Gonzalez
John T. Grammer
Russell W. Green
Evelyn Greer
Richard D. Griffin
Ed Guerrero
Don Guthrie
Sylvia Guzman
Leslie Haas
Patricia A. Hagen
Grant Hale
C. Jason Hand
Ruth Hanna
Dell G. Hannasch
Robert R. Harbour
Robert R. Harbour
Marilou Haren
Harper/Huddleston
Mary Ann Haston
Bobbie F. Hatton
Kathleen J. Havard
Delbert Hayes
Health by Design
Management, L.L.P.
Calvin R. Henze
Barbara J. Heyer
Alan E. Hildreth
Robert W. Hilliard
Doris E. Hoehne
Donald Hoelscher
Mark Hoffa
Lynn Hoffman
Malcolm Hoffmann
Lorena A. Holden
David Holdsworth

Mary Anne Holick-Thompson
John D. Holland
P.D. Holland
George D. Holzhaus
Joseph J. Hope
Larry Hudler
Helen W. Hunt
Jackie Igo
InSCO Distributing
Wallace T. Jacobs
Geneva E. Jacobson
Jolie B. Jaffe
Jo Anne James
Jimmie L. Joffe
Marty Joiner
Carlos Jones
Charlotte A. Jordan
Edward Kassof
Barbara Keltz
Robert L. Kent
Cora Jo Kerns
Jim W. Keyes
Prakashini U. Kharod
W. B. King
Robert Kinnear
Rex L. Klaurens
Gregory J. Knaus
Preston Knodell
Joyce O. Koch
Betty Krueger
Jeff Kuhn
B. R. La Roque
William E. Larson
Susie M. Leatherwood
Russell Lee
Alice F. Leese
Joan K. Lehmann
Sam Ligon
Geroge R. Lindquist
Marcia K. Lindsey
Rachel C. Lopez
George E. Lovett
Hank Lowrance
Glory Ann Luensmann
Phillip T. Mackey
Eugenie D. Madden
William C. Maddox
Robert L. Markgraf
Daniel B. Mason
Carol C. Matter
Jim Matthews
Betty A. Mayes
J. Laland McCormick
Thomas J. McGuire
David W. McIlvoy
McMarr Properties, Inc.
Jean L. McPherson
Mark Meador
James Michelini
William C. Mickler
Gerald G. Miller
Pat Molak
Gil Moore
John G. Morgan
Rex Morgan
Mary Ann Morgester
Cindy E. Mosley
John T. Moua
Lois A. Muesing
Daniel T. Mullinix
Efigenio R. Mustelier
William Nagelmueller
Joseph S. Neigut
J. Peter Nettelfield
Betty R. Newman

Marjorie Nichols
J. R. Nicholson
Jane F. Noe
Robert D. Nothstine
Karen Novak
Richard D. O'Neil
John Onderdonk
Rene Ornes
Edward J. Orr
Osvaldo Ortiz
Richard E. Otero
Pamla Palmer
Patrick M. Palmer
Joseph A. Pareres
Jack D. Parker
Lisa Patel
Lester J. Paulick
William M. Pearson
Henry D. Pease
Yvonne Perez
Larry Persyn
Homer W. Phillips
Ruben Pina
Mark Pogue
Louis R. Posgate
Robert Pritchard
Alex Pruitt
Randolph Enlisted
Wives Club
Edward A. Recko
Warren Remmey
Gloria Resendez
Bill Reynolds
Dennis A. Richards
Earline Richardson
Keith G. Riebe
John W. Robb
William F. Robertson
Sylvia Rodax
Gary Rodgers
James H. Rogers
Burt Rowen
Rufers Coin Company
Frank E. Ruggles
Gerald W. Rumpf
Vaughan Ruple
Laura Russell
Elaine Rutledge
Frances Sadler
Gilbert A. Saltkield
San Antonio Brake & Clutch
Service Inc.
San Antonio Weddings
Caroline M. Sanford
Sharon A. Sapp
Richard Sarfin
Edwin O. Sarratt
Robert C. Saunderson
Lyn W. Schaefer
Clarence A. Scheel
Phyllis A. Scheets
Karl Scholze
Kenneth T. Schott
Bonnie Schulze
Beverly B. Sharp
Edwin L. Sheldon
Milton N. Shifflett
Joan E. Silva
Gregory G. Simmons
Bruce Smith
Gloria P. Smith
James F. Smith
Gordon W. Sommers
Gary R. Speer
Mary G. Spence

Elfie Stafford
Kathelee C. Staley
Elvira M. Stanush
F.B. Steadmon
Jonnie M. Stefano
Burrell H. Stewart
O. M. Storlie
J. D. Storment
Elwood D. Storrs
Willfloyd P. Strey
Earl W. Stuckey
Larry D. Stull
Marjorie Stull
Jack Summey
Robert B. Sunderland
Lawrence C. Swetz
Irene H. Szurgot
Lytle L. Taylor
The Beadle Family Foundation
The Jesse H. & Susan
Oppenheimer Foundation
Gregg Thompson
Tim's Fine Art Studio
Noelia Torres
Towne and Country
Optimist Club
Oran J. Tsakopoulos
Josefine Turner
Larry Van Horn
Steve Vander Vorste
John F. Vanwicklen
Sandra Vetter
Roel Villarreal
Jose Villasenor
Alfredo Vitela
Arthur C. von Minden
Sadie P. Wade
Neill B. Walsdorf
JoAnn R. Ware
John W. Warncke
Charles Wedge
Charles L. Weed
Margaret M. Wegeforth
Tom Wehe
Larry M. Weigum
Brian L. Weiner
Rubin Weiss
Edward D. Wells
Elsie M. Wendel
Mary F. West
Alva R. Whatley
William E. Wheeler
Donald H. Whitler
Kyle Whitmire
Peter Wiechert
Albert L. Wile
Lisa M. Willbanks
John Willborn
Betty J. Williams
Paul A. Williams
David Williamson
Thomas M. Wilmmotte
Frank Windhorst
C. Douglas Winslow
Gerald W. Winston
David M. Withers
Russell Woda
Mark Woods
Raymond Woodworth
Billy E. Wray
Mary Jane Yelvington
James C. Young
Louis E. Youngblood
Ralph F. Ziegler
Mary Zimmerman